

Visiting Winterthur Museum, Garden & Library

A social narrative for visiting Winterthur



Suchat Pederson



1.

Today we are going to Winterthur Museum, Garden & Library with our class on a field trip! While we are there, we will look at objects from the past or walk through their gardens. We may do both. We will have fun!



2.

The bus will drop us off at the museum. We will exit the bus in our groups and meet our School Program Guide.



3.

We will have a School Program Guide with us for our whole field trip. Our School Program Guide will teach us about what we will see in the museum or gardens.



Suchat Pederson

4.

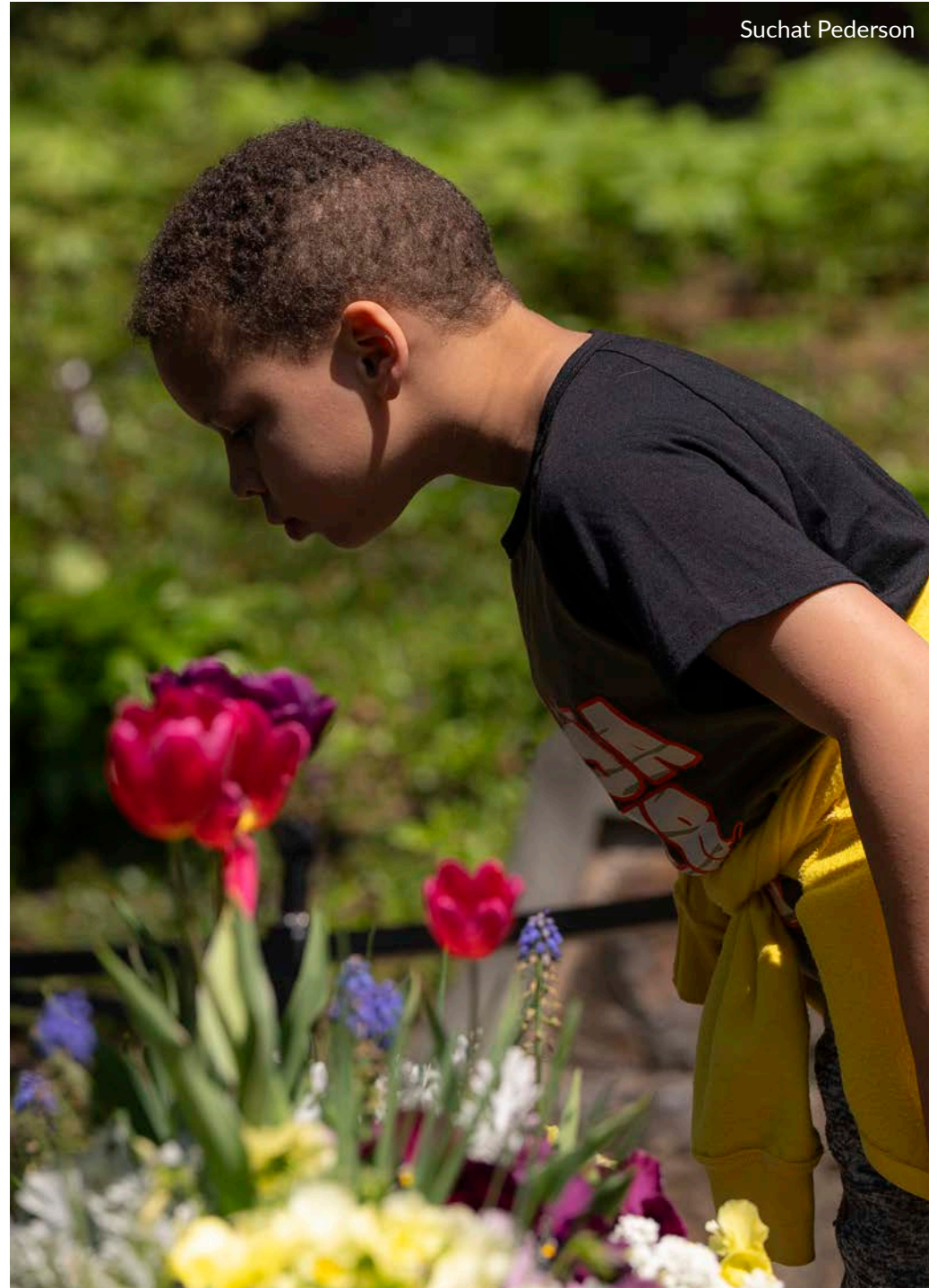
We will follow our School Program Guide indoors, where we will leave our coats, lunch boxes, and bags in the yellow bins. The School Program Guides will keep the yellow bins in a safe place. We will get our things back again at lunchtime and before we leave.



5.

Our School Program Guide will tell us about Winterthur Museum's rules, which include:

- ◆ We will keep our hands to ourselves when we are inside the museum.
- ◆ We will keep our food, drinks, gum, and bags in the yellow bins.
- ◆ If we go outside, we will stay on the path and be respectful of plants and animals.



6.

Our School Program Guide will take us to many different spaces so we can do many different things at Winterthur. We might walk, stand, sit on the floor, take the stairs, or use an elevator. This is OK!



7.

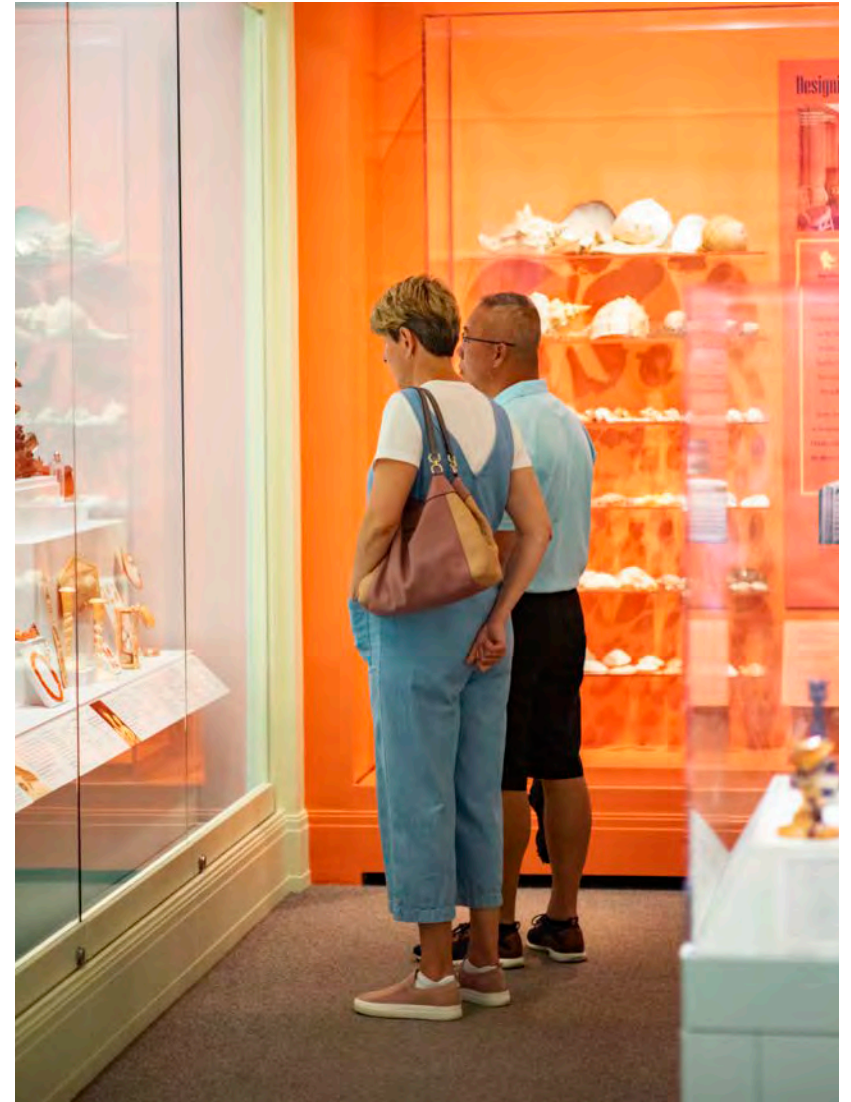
There will be a story or activity in each new area we visit. Our School Program Guide might ask us questions, help us with an activity, or have us draw a picture.



Suchat Pederson

8.

There will be other people in the museum and gardens. They are here to enjoy their time at Winterthur, too.





9.

After our morning program, we might eat lunch at Winterthur. We will eat lunch outside. If it's raining, we will eat indoors.

10.

After lunch, we might do another program at Winterthur. If we were inside in the morning, we will spend time outside. If we were outside in the morning, we will go inside the museum. We may have a different School Program Guide for this new activity. The number of people in our group might also change. This is OK!



11.

When our field trip is over, we will say goodbye to Winterthur's School Program Guides and go back to where our bus dropped us off. We will get our belongings from the yellow bins. We will get back on the bus and head back to school.



12.

We hope that we will be able to visit Winterthur again soon, either on another field trip or with our family!

